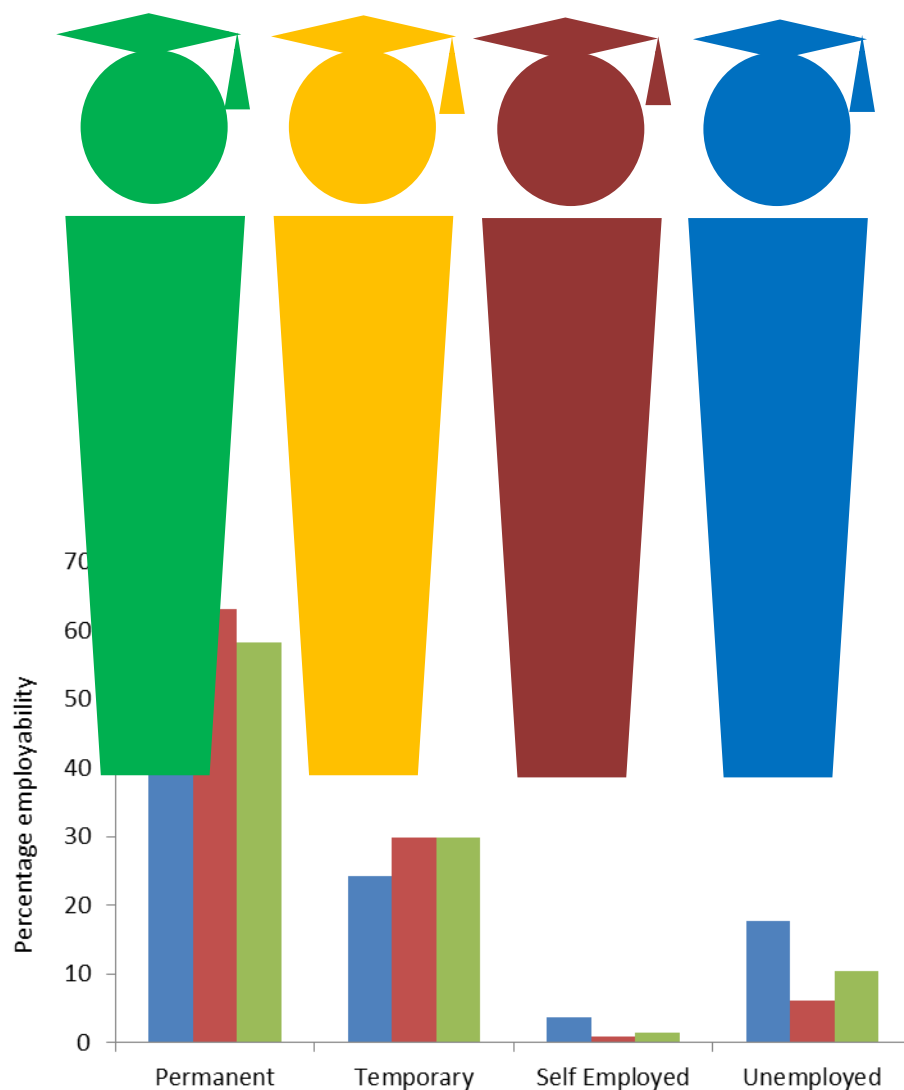


EMPLOYABILITY SURVEY REPORT

WAYAMBA UNIVERSITY OF SRI LANKA



External Affairs Unit
2014



EMPLOYABILITY SURVEY REPORT

WAYAMBA UNIVERSITY OF SRI LANKA

by
Dr. W.M.H.K. Wijenayake and Dr. Aminda Perera
External Affairs Unit
Wayamba University of Sri Lanka
2014

This report should be sited as;
Wijenayake W.M.H.K and Perera A.M. (2014), Employability Survey Report of
Wayamba University of Sri Lanka 2014.

Published by:

External Affairs Units

Wayamba University of Sri Lanka

Addresses: Coordinator/External Affairs (Makandura Premises)

Department of Aquaculture & Fisheries

Faculty of Livestock, Fisheries & Nutrition

Makandura

Gonawila

Coordinator/External Affairs (Kuliyapitiya Premises)

Department of Insurance & Valuation

Faculty of Business Studies & Finance

Kuliyapitiya

E-mail: hiranya_kelum@yahoo.com

methsila240@yahoo.com

All queries should be addressed to:

Coordinator

External Affairs Unit

Wayamba University of Sri Lanka

Makandura

Gonawila

Fax: 031-2299874

E-mail: hiranya_kelum@yahoo.com

Typesetting & Designed by: P.G. Lakmali Gamage, Computer Applications Assistant

SUMMARY

This report intends to analyse the employability of the students, who graduated from the Wayamba University of Sri Lanka in 2014. Information pertaining to this report was collected from the graduates at their General Convocation. A questionnaire was distributed among all graduates, who were eligible to obtain their degrees in 2014. Questionnaires were distributed one week before their Convocation and completed questionnaires were collected at the convocation. This questionnaire survey was conducted by the two external affairs coordinators of Makandura and Kuliapitiya premises of the Wayamba University of Sri Lanka with the support of the assistant registrars of four faculties. This report is based on the employability status of graduates between the period of completion of the degree and their convocation in 2014.

Overall employability of the Wayamba University was reported as 89.55%. Among the graduates 58.21% obtained permanent jobs while 29.85% were doing temporary jobs. Among all students graduated from the university, 10.45% were not employed at the time of the survey. Very few students owned their own employment and it was 1.49% of the total of graduates. The salary scales of the majority of graduates ranged from 20000 to 30000 rupees. More than 75% of relevancy of the field of study to the job was reported among 65.59% of the graduates. The percentage employability in 2012, 2013 and 2014 was reported as 82.24%, 93.86% and 89.55% respectively. The result of the employability status of the Wayamba University of Sri Lanka is impressive and it reflects the relevancy of the degree programmes to the need of the present job market. Also it indicates the ability of the graduates of the Wayamba University of Sri Lanka to draw the attraction of the entrepreneurs. This result indicates the demand and the better performances of graduates of the Wayamba University, in the highly competitive job market.

ACKNOWLEDGEMENTS

We are thankful to the Vice Chancellor and the Registrar, Wayamba University of Sri Lanka for the support given by providing necessary approvals for the collection of information from the Faculties. Also we extend our sincere gratitude to the Deans of the respective Faculties for their facilitation and support given in the data collection.

Our special thanks go to the Assistant Registrars of the Faculty of Agriculture & Plantation Management, Faculty of Applied Sciences, Faculty of Business Studies & Finance and Faculty of Livestock, Fisheries & Nutrition for the support extended during the period of information collection.

W.M.H.K Wijenayake Ph.D.
Coordinator/External Affairs Unit
Makandura premises
Wayamba University of Sri Lanka

Aminda Perera Ph.D.
Coordinator/External Affairs Unit
Kuliyapitiya Premises
Wayamba University of Sri Lanka



TABLE OF CONTENTS

Summary	i
Acknowledgements	ii
Table of Contents	iii
Abbreviations and Acronyms	iv
Introduction	1-2
Reports - Faculty of Agriculture & Plantation Management	3-8
Faculty of Applied Sciences	9-14
Faculty of Business Studies & Finance	15-20
Faculty of Livestock Fisheries & Nutrition	21-26
Comparison of Employability in Four Faculties during the period from 2012 to 2014	27-31
Annexure I - Questionnaire	32-33



ABBREVIATIONS AND ACRONYMS

AF	Aquaculture & Fisheries
LAS	Livestock & Avian Sciences
FST	Food Science & Technology
AN	Applied Nutrition
PM	Plantation Management
HLG	Horticulture & Landscape Gardening
BT	Biotechnology
AM	Agribusiness Management
IM	Industrial Management
MS	Mathematical Sciences
E	Electronics
CMIS	Computing & Information System
BM	Business Management
ABF	Accountancy & Business Finance
BF	Banking & Finance
IV	Insurance & Valuation



Introduction

Employability is about having the capability to gain initial employment, maintain employment and obtain new employment if required. Current higher education system in Sri Lanka has given attention to the employability rate of graduate students in relation to their area of study. Although, it is not guaranteed to have a job after graduation, it indirectly indicates the capability of the students to fit into the prevailing job market. It reflects the acceptance of the intellectually sound and knowledgeable young generation produced in universities by the entrepreneurs. Also it is important to have the service of graduates for the national development as it is the only way of returning the state investment in the higher education. As such, the state universities in Sri Lanka are interested in analysing the employability states of their graduates. Also curricula of the universities pay more attention to mould their graduates with knowledge, skills and attitudes, which are considered as the assets of an employee (McQuaid and Lindsay, 2005). The ability to use and deploy those assets and the way they present them to the employer are crucial factors of obtaining a job in the highly competitive job market. It is also more competitive and difficult to obtain a job in the field of interest and in the context within which they seek to work. Poor employability status of graduates alarms the universities on the need of revisiting the courses offered by the respective faculties and on the need of revising or improving their curriculums in par with the new trends in the modern job market. Also information on employability is important for educational planners and policy makers to make decisions and modify their approaches (Ramanayake and Pathirathne, 2012).

Wayamba University of Sri Lanka, the thirteenth university of the national university system, is relatively new and it was established in 1999. It consists of four faculties; Faculty of Agriculture and Plantation Management, Faculty of Applied Sciences, Faculty of Business studies and Finance, and Faculty of Livestock, Fisheries and Nutrition.

Each faculty consists of four departments making it sixteen departments in the entire university. Most of the departments and the course combinations are unique to the Wayamba University of Sri Lanka and the objective of that diversification is to increase the employability of the graduates. This report shows the employability status of different faculties of Wayamba University of Sri Lanka in the year 2014 with a comparison to the past two years.

Methodology

Information needed for the preparation of this document was collected through a questionnaire (Annexure I). Information from the students graduated in the year 2014 was subjected to this analysis and information pertaining to this study was based on the duration between the completion of the degree programme and the convocation. Questionnaires were handed over to students one week before the convocation. Completed questionnaires were collected by the Assistant Registrars of the Faculty of Agriculture & Plantation Management, Faculty of Applied Sciences, Faculty of Business studies and Finance and Faculty of Livestock, Fisheries and Nutrition at the convocation. The time durations between the final examination and the convocation were different among four Faculties and in the Faculty of Agriculture and Plantation Management and Faculty of Livestock, Fisheries & Nutrition, it was reported as approximately 03 and ½ months, in the Faculty of Applied sciences it was reported as 1 year and 5 months, and in the Faculty of Business Studies and Finance it was reported as approximately 1 year & 2 months.

***FACULTY OF AGRICULTURE &
PLANTATION MANAGEMENT***

**EMPLOYABILITY STATUS OF GRADUATES
OF WAYAMBA UNIVERSITY OF SRI LANKA IN 2014**

FACULTY OF AGRICULTURE & PLANTATION MANAGEMENT

Response rate

The census comprises of the graduates of all four departments of the faculty. As it can be seen from the table below, the response rates were high among all graduates from four departments. Out of all the 92 graduates, 90 responded to this census.

Department	No. of questionnaires sent	No. of questionnaires received
Plantation Management	31	31
Horticulture & Landscape Gardening	21	21
Biotechnology	11	10
Agribusiness Management	29	28
Total	92	90

Employability status of graduates

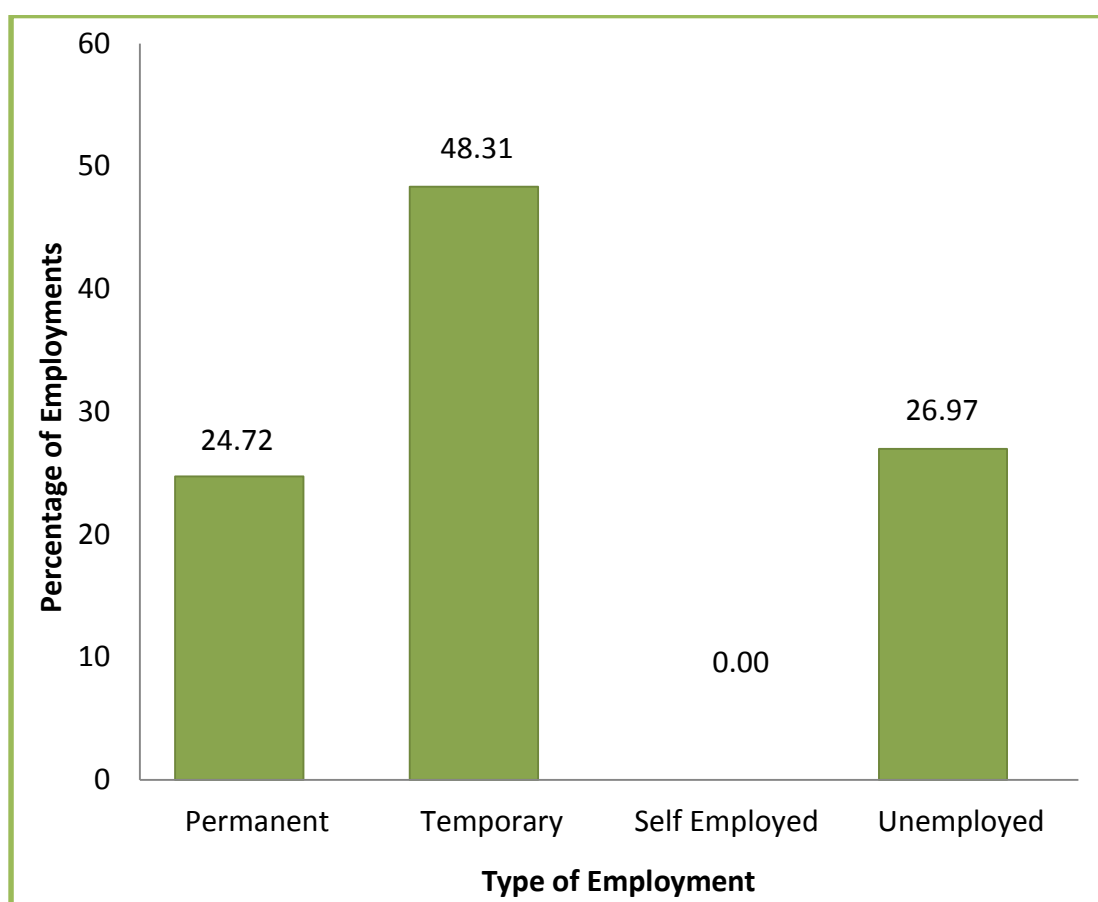
Among the students responded, 24.72% were employed in permanent jobs while 48.31% were doing temporary jobs. Out of the students graduated from the Faculty of Agriculture and plantation Management, 26.97% were unemployed during the period of the survey. The following table indicates the different categories of employment in relation to the field of specialization and the graph shows the rate of employability of the graduates of the Faculty of Agriculture and plantation Management in different categories of employment.

Different categories of employment in relation to the field of specialization

Department	Permanent	Temporary	Self Employed	Unemployed	Total
Plantation Management	8	16	0	7	31
Horticulture & Landscape Gardening	4	10	0	6	20
Biotechnology	2	6	0	2	10
Agribusiness Management	8	11	0	9	28
Total	22	43	0	24	89

(Note: One student in the sample has not been indicated the employability category as such, this analysis is based on the information of 89 students)

Percentage employability in different categories of employments



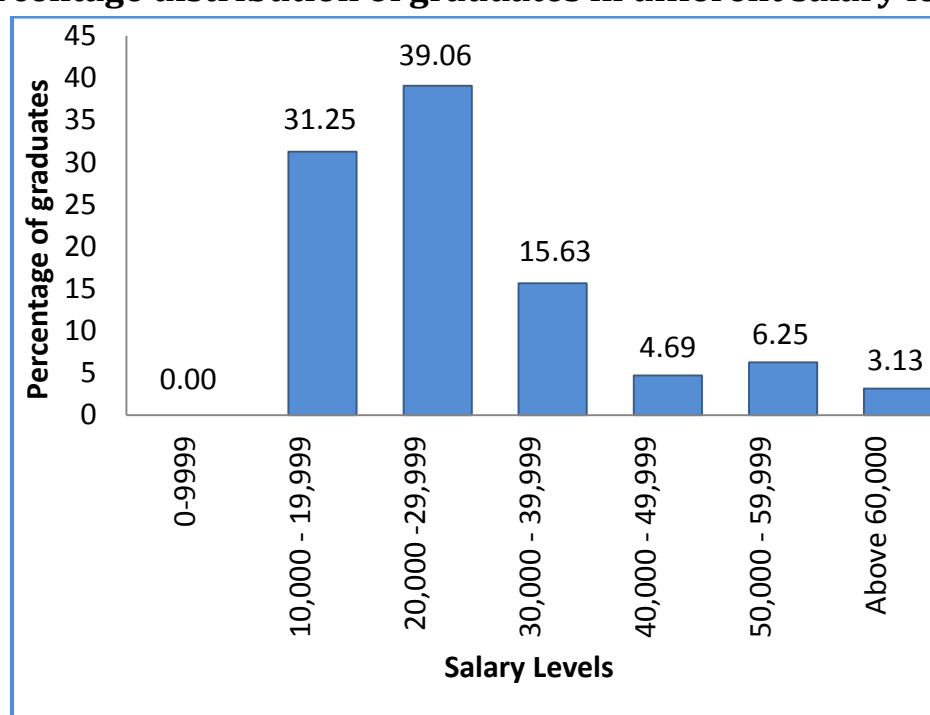
Monthly salary levels

Status of monthly basic salaries was based on the 64 respondents as others did not declare the income status in the questionnaire. Among the responded graduates 39% obtained from 20,000 to 29,999 rupees and 31% of graduates obtained 10,000-19,999 rupees as their monthly salary. These two groups represent the 70% of the total responded graduates for this question. Two graduates obtained salaries above 60,000 rupees and four graduates fall into 50,000 to 59,999 category. The following table indicates the distribution of graduates in different salary levels in relation to their field of specialization and the graph shows the distribution of monthly income levels of graduates of the faculty in the year 2014.

Salary levels of graduates in relation to their field of specialization

Monthly Salary Levels (LKR)	Department				Total
	PM	HLG	BT	AM	
0-9,999	0	0	0	0	0
10,000 - 19,999	9	6	0	5	20
20,000 -29,999	10	6	3	6	25
30,000 - 39,999	2	2	3	3	10
40,000 - 49,999	0	0	1	2	3
50,000 - 59,999	1	0	0	3	4
Above 60,000	2	0	0	0	2
Total	24	14	7	19	64

Percentage distribution of graduates in different salary levels



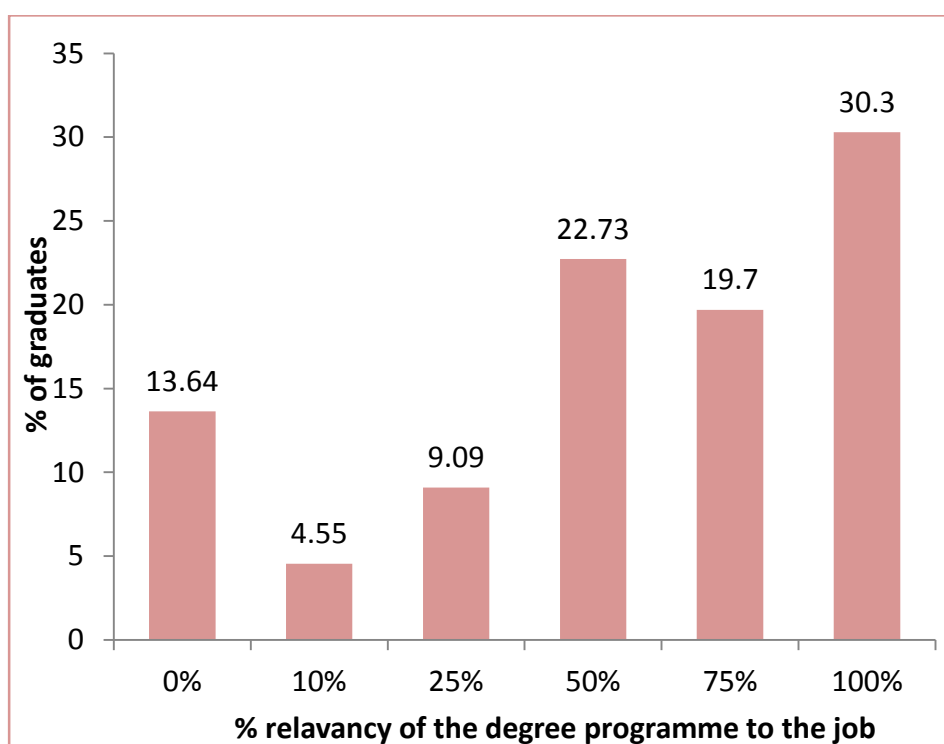
Relevancy of the degree programme to the job

Out of the 90 respondents 66 graduates answered this question and the information given by those 66 graduates was used for the analysis. Among all respondents 73% of graduates were employed in jobs, which have more than 50% of relevancy to their field of study and 50% of graduates' jobs had 75% of relevancy to their fields of studies. The following table shows the relevancy levels of the field of study to the jobs and the graph shows the relevancy levels of the degree programme to their job.

Relevancy of the field of study to the job

Department	Level of Relevancy					
	Not Relevant 0%	10%	25%	50%	75%	100%
Plantation Management	3	1	4	6	4	6
Horticulture & Landscape Gardening	0	1	2	3	2	7
Biotechnology	1	0	0	2	2	3
Agribusiness Management	5	1	0	4	5	4
Total	9	3	6	15	13	20

Relevancy of the degree programme to the job



Postgraduate/other qualifications held at present

Postgraduate and other qualifications are some of the main factors that illustrate the need of a graduate to improve his/her knowledge and skills in a specific field. It can be an additional qualification for them to establish in their working environment or facilitate the movement on the ladder of hierarchy. Although it is impossible to complete postgraduate qualifications by the time of the survey, some of the graduates were qualified at least with a Diploma. Out of the 90 respondents 54% possess the qualification of a diploma and one student was reading for his M.Phil Degree. Also another student had already completed the LL.B. Degree. The following table shows the distribution among different postgraduate qualifications of graduates of the Faculty of Agriculture and plantation management.

Postgraduate/other qualifications held at present

Department	Qualifications					
	MSc.	MPhil	MBA	PhD	LL.B	Diploma & Other
Plantation Management	0	0	0	0	0	16
Horticulture & Landscape Gardening	0	0	0	0	0	11
Biotechnology	0	1 (Reading)	0	0	0	6
Agribusiness Management	0	0	0	0	1	16
Total	0	1	0	0	1	49

FACULTY OF APPLIED SCIENCES

**EMPLOYABILITY STATUS OF GRADUATES
OF WAYAMBA UNIVERSITY OF SRI LANKA IN 2014**

FACULTY OF APPLIED SCIENCES

Response rate

The census comprises the graduates of all four departments of the faculty. As it can be seen from the table below, the response rates were high among all graduates from four Departments. Out of all 129 graduates, 117 responded to this census.

Department	No. of questionnaires received
Industrial Management	23
Mathematical Sciences	43
Electronics	30
Computing & Information Systems	21
Total	117

Employability status of graduates

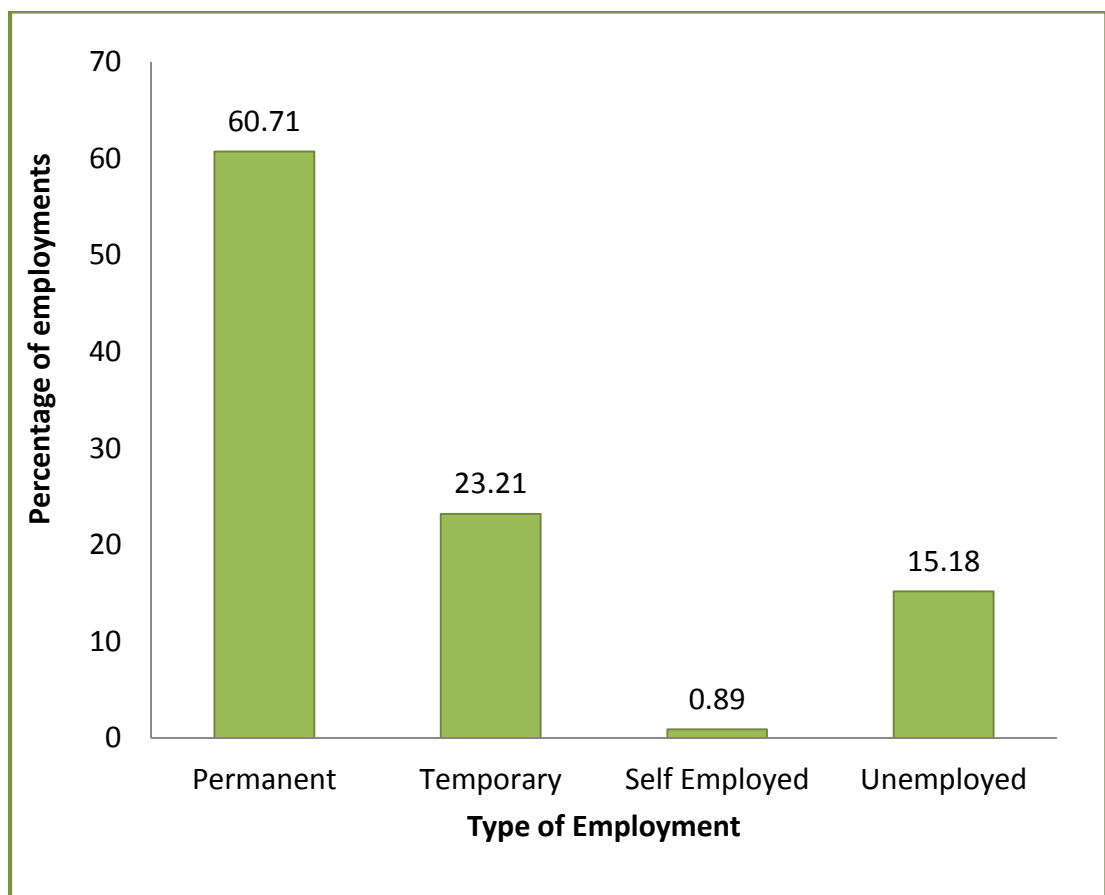
Among the students responded 60.71% were employed in permanent jobs while 23.21% were doing temporary jobs. 15.18% of the students graduated from the Faculty of Applied Sciences were unemployed during the period of the survey. One student of the respondents was self-employed during the said period. The following table indicates the actual numbers of graduates in different categories of employment in relation to their specialization and the graph shows the rate of employability of the students of the Faculty in different categories of employment respectively.

Different categories of employment in relation to the field of specialization

Department	Permanent	Temporary	Self Employed	Unemployed	Total
Industrial Management	15	6	0	2	23
Mathematical Sciences	23	7	1	8	39
Electronics	16	11	0	3	30
Computing & Information Systems	14	2	0	4	20
Total	68	26	1	17	112

(Note: Five students in the sample has not been indicated the employability category as such, this analysis is based on the information of 112 students)

Percentage employability in different categories of employment



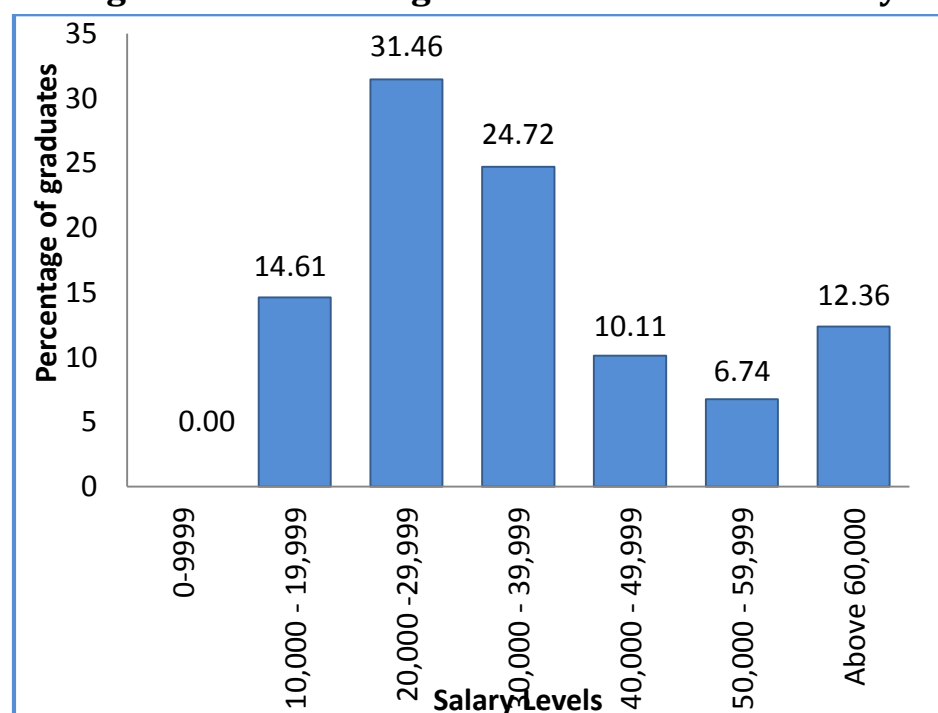
Monthly salary levels

Status of monthly basic salaries was based on the 89 respondents as others did not declare the income status in the questionnaire. Out of the 89 students responded for the questionnaire, 53.93% obtained salaries above 30,000 rupees. Among the graduates responded 12.36% obtained above 60,000 rupees and 6.74% of graduates obtained 50,000-59,999 rupees as their monthly salary. Majority of them (31.46%) were in the salary category of 20,000 to 29,999 rupees while 24.72% graduates earn a monthly income ranging from 30,000 to 39,999 rupees. The lowest salary category was 10,000 to 19,999 rupees and 14.61% graduates fell into that category. The following table and the graph show the distribution of graduates among different salary levels in relation to their specialization and the frequency distribution of monthly income of employed graduates respectively.

Salary levels of graduates in relation to their field of specialization

Monthly Salary Levels (LKR)	Department				Total
	IM	MS	E	CMIS	
0-9,999	0	0	0	0	0
10,000 - 19,999	3	4	4	2	13
20,000 -29,999	6	11	7	4	28
30,000 - 39,999	5	9	3	5	22
40,000 - 49,999	2	3	2	2	9
50,000 - 59,999	1	1	4	0	6
Above 60,000	2	2	5	2	11
Total	19	30	25	15	89

Percentage distribution of graduates in different salary levels



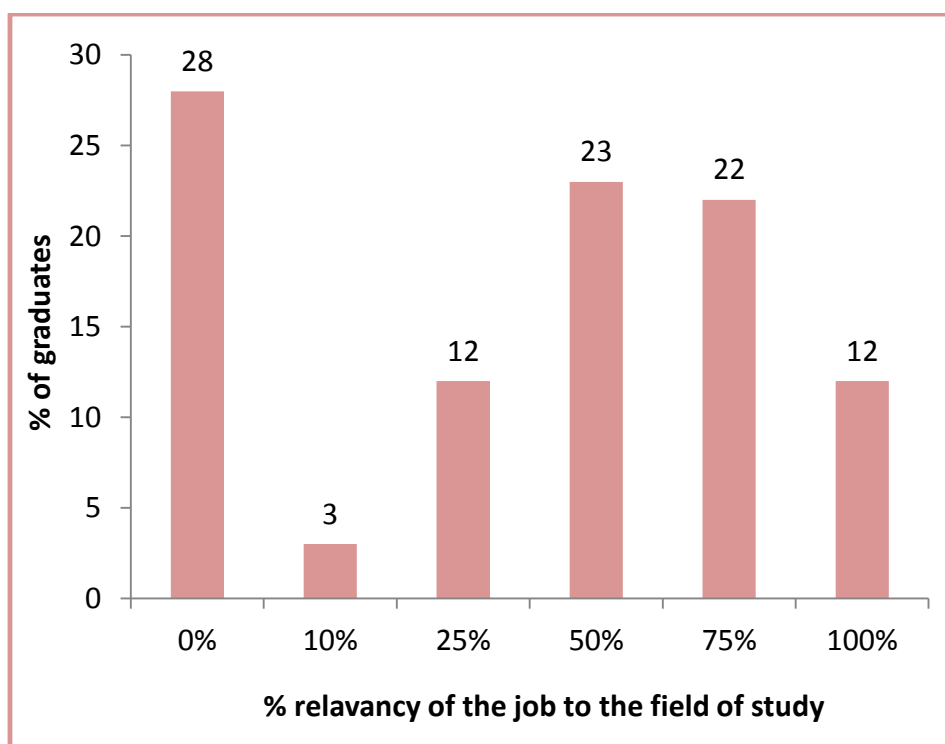
Relevancy of the degree programme to the job

Out of the 117 respondents 100 graduates answered this question. Among all respondents 57% of the graduates were employed. They had more than 50% of relevancy to their field of study and 43% of the employed had jobs, which had less than 50% of relevancy to their fields of studies. The following table and the graph show the distribution of students among different levels of relevancy to their field of study and the percentage frequency of relevancy to their degree respectively.

Relevancy of the field of study to the job

Department	Level of Relevancy					
	Not Relevant 0%	10%	25%	50%	75%	100%
Industrial Management	2	2	2	8	3	4
Mathematical Sciences	17	1	5	4	7	2
Electronics	6	0	2	6	8	3
Computing & Information Systems	3	0	3	5	4	3
Total	28	3	12	23	22	12

Relevancy of the degree programme to the job



Postgraduate/ other qualifications held at present

Among all respondents 33.33% graduates had a diploma and three were reading for the MSc. Another one was reading for an MBA degree. The following table shows the postgraduate/other qualifications presently held by the graduates of the Faculty of Applied Sciences in 2014.

Postgraduate/Other Qualifications held at present

Department	Qualifications					
	MSc.	MPhil	MBA	PhD	LL.B	Diploma & Other
Industrial Management	1 (Reading)	0	0	0	1	12
Mathematical Sciences	1	0	0	0	0	8
Electronics	0	0	1 (Reading)	0	0	10
Computing & Information Systems	1	0	0	0	0	9
Total	3	0	1	0	1	39

***FACULTY OF BUSINESS STUDIES
& FINANCE***

***EMPLOYABILITY STATUS OF GRADUATES
OF WAYAMBA UNIVERSITY OF SRI LANKA IN 2014
FACULTY OF BUSINESS STUDIES & FINANCE***

Response rate

The census consists of the graduates of all four Departments of the faculty. As it can be seen from the table below, the response rates were high among all graduates from four departments. Out of all the 220 graduates, 208 responded to this census.

Department	No. of questionnaires sent	No. of questionnaires received
Business Management	101	96
Accountancy & Business Finance	84	79
Banking & Finance	12	10
Insurance & Valuation	23	23
Total	220	208

Employability status of graduates

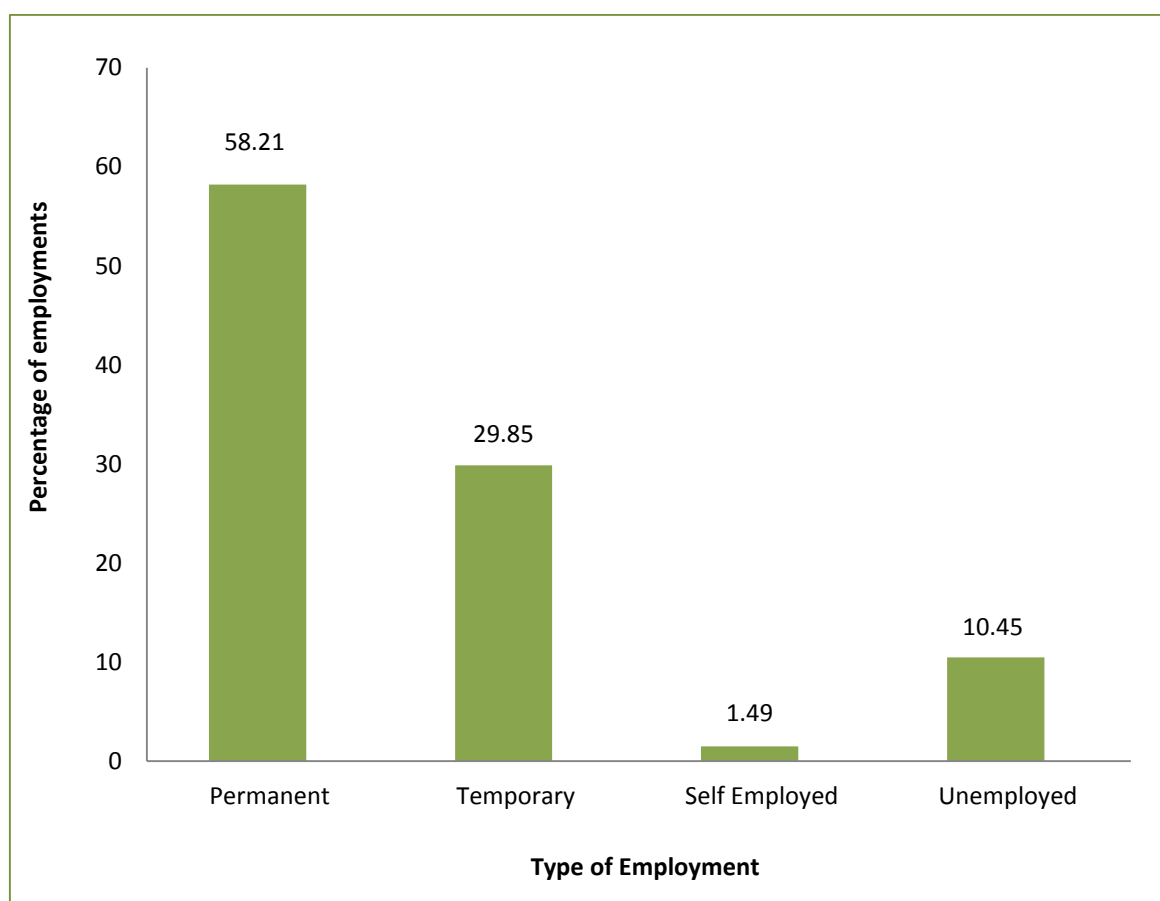
Out of the students responded, 58.21% were employed in permanent positions while 29.85% were doing temporary jobs and 10.45% of the students graduated from the Faculty of Business Studies and Finance were unemployed during the period of the survey. Three of the respondents were self-employed at the time of the survey. The following table indicates the different categories of employment in relation to the field of study and the graph shows the rate of employability in different categories of the graduates of the Faculty of Business studies and management.

Different categories of employment in relation to the field of specialization

Department	Permanent	Temporary	Self Employed	Unemployed	Total
Business Management	65	20	03	06	96
Accountancy & Business Finance	29	32	0	13	74
Banking & Finance	06	03	0	01	10
Insurance & Valuation	17	03	0	01	21
Total	117	60	03	21	201

(Note: Seven students in the sample has not been indicated the employability category as such, this analysis is based on the information of 201 students)

Percentage employability in different categories of employment



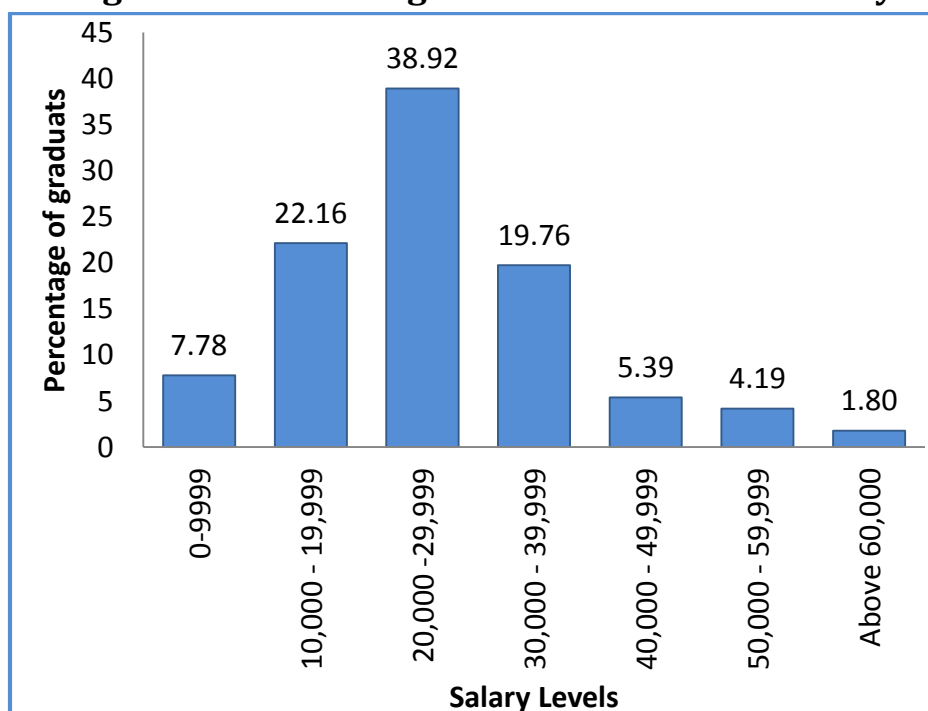
Monthly salary levels

Status of monthly basic salaries was based on the 167 respondents as others did not declare the income status in the questionnaire. Out of the 167 students responded for the questionnaire 31.14% obtained salaries above 30,000 rupees. Majority of them (38.92%) were in the salary category of 20,000 to 29,999 rupees while 19.76% graduates obtained a monthly salary ranging from 30,000 to 39,999 rupees. Three graduates from the respondent obtained above 60,000 rupees as the monthly salary. The lowest salary category was 10,000 to 19,999 rupees and 7.78% graduates were in that category. The following table indicates the distribution of graduates among different salary levels in relation to their field of specialization and graph shows the distribution of employed graduates among different salary levels in 2014.

Salary levels of graduates in relation to their field of specialization

Monthly Salary Group (LKR)	Department				Total
	BM	ABF	BF	IV	
0-9,999	02	11	0	0	13
10,000 - 19,999	15	20	0	02	37
20,000 -29,999	35	15	05	10	65
30,000 - 39,999	15	09	03	06	33
40,000 - 49,999	06	02	01	0	09
50,000 - 59,999	04	02	0	01	07
Above 60,000	02	01	0	0	03
Total	79	60	09	19	167

Percentage distribution of graduates in different salary levels



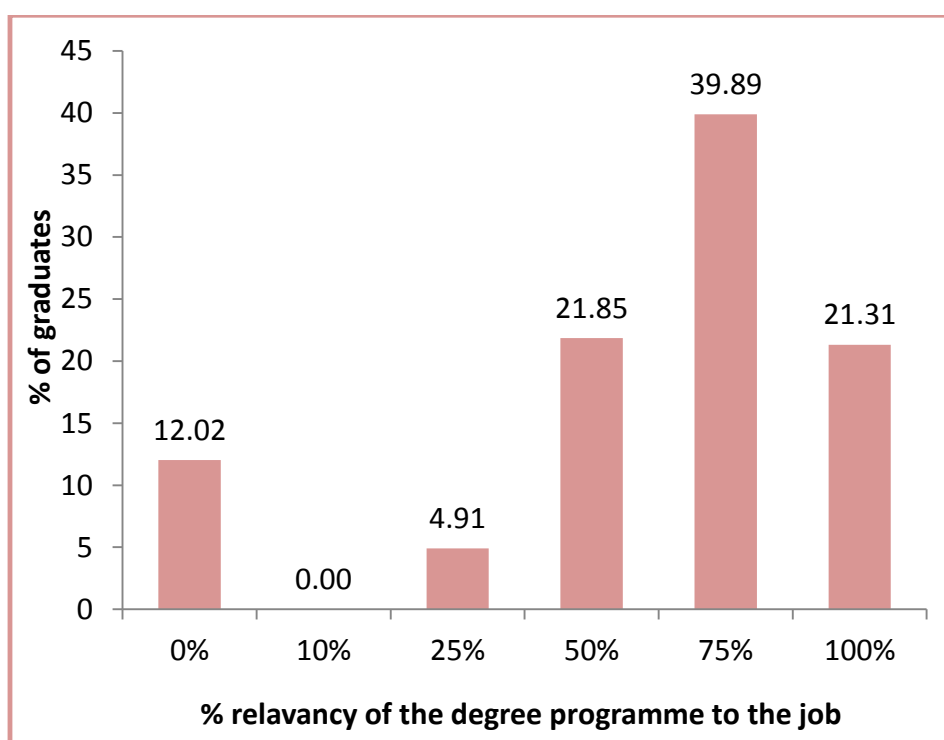
Relevancy of the degree programme to the job

Out of 208 respondents 183 graduates answered this question. Therefore the information of 183 was used for the analysis. Among all respondents 83% of graduates were employed, which had more than 50% of relevancy to their field of study and jobs of 61.2% graduates had 75% of relevancy to their fields of studies. 17% respondents, who were employed, had a low relevancy to their field of study. The following table shows the relevancy of the field of study to their jobs and the graph shows the relevancy of the degree programme to their jobs.

Relevancy of the field of study to the job

Department	Level of Relevancy					
	Not Relevant 0%	10%	25%	50%	75%	100%
Business Management	11	0	06	26	36	08
Accountancy & Business Finance	08	0	02	14	28	13
Banking & Finance	0	0	0	0	03	06
Insurance & Valuation	03	0	01	0	06	12
Total	22	0	09	40	73	39

Relevancy of the degree programme to the job



Postgraduate/ other qualifications held at present

Among all respondents 77.4% graduates composed with a Diploma and one was reading for the MSc. degree. The following table shows the postgraduate/ other qualifications presently held by graduates of the Faculty of Business Studies and Finance in 2014.

Postgraduate/Other Qualifications held at present

Department	Qualifications					
	MSc.	M.Phil	MBA	PhD	LL.B	Diploma & Other
Business Management	0	0	0	0	0	76
Accountancy & Business Finance	0	0	0	0	0	64
Banking & Finance	01 (Reading)	0	0	0	0	08
Insurance & Valuation	0	0	0	0	0	13
Total	01	0	0	0	0	161

***FACULTY OF LIVESTOCK
FISHERIES & NUTRITION***

**EMPLOYABILITY STATUS OF GRADUATES
OF WAYAMBA UNIVERSITY OF SRI LANKA IN 2014**

FACULTY OF LIVESTOCK FISHERIES & NUTRITION

Response rate

The census consists of the graduates from all four Departments of the faculty. As it can be seen from the table below, the response rates were high among all graduates from four departments. Out of all the 63 graduates, 58 responded to this census.

Department	No. of questionnaires sent	No. of questionnaires received
Aquaculture & Fisheries	14	13
Livestock & Avian Sciences	12	11
Food Science & Technology	19	18
Applied Nutrition	18	16
Total	63	58

Employability status of graduates

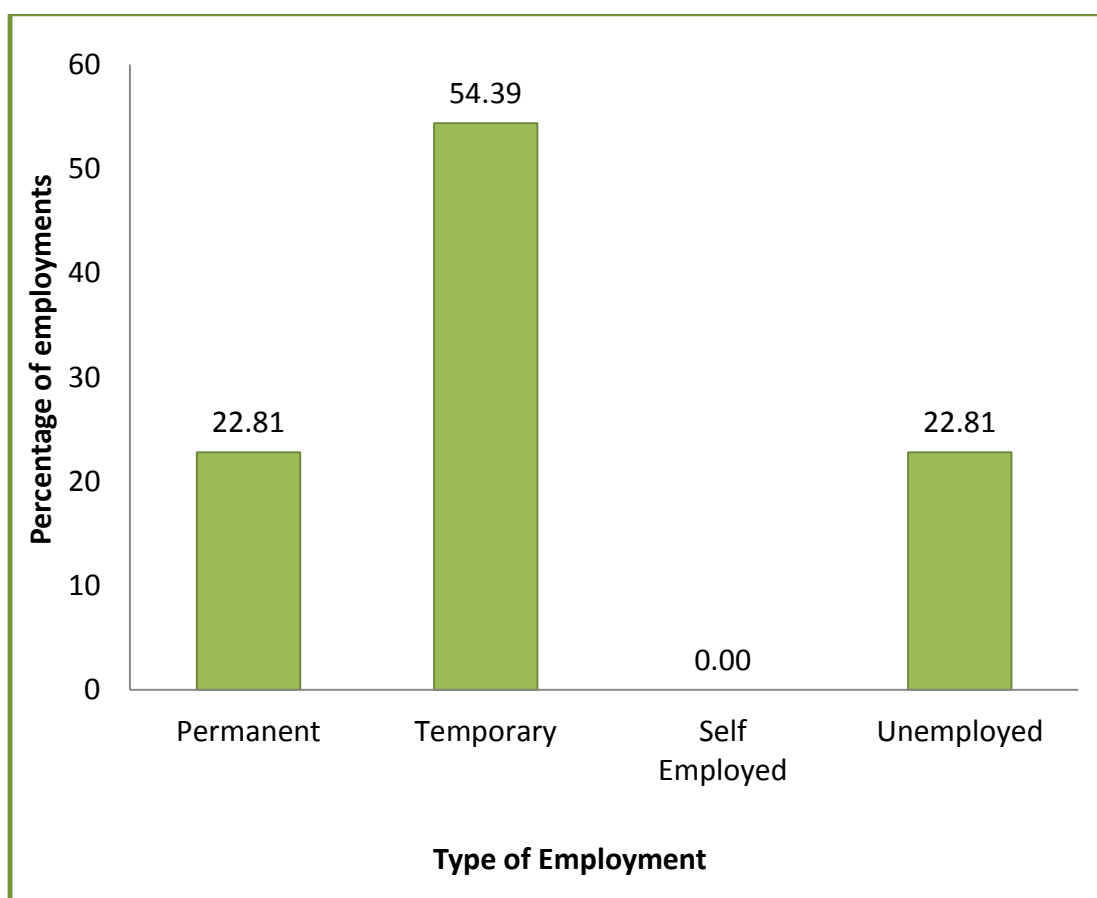
Out of the students responded, 22.81% were employed in permanent positions while 54.39% were doing temporary jobs and 22.81% of the students graduated from the Faculty of Faculty of Livestock, Fisheries and Nutrition were unemployed during the period of the survey. The following table indicates the distribution of graduates in different categories of employment in relation to their field of specialization. The graph shows the rate of employability of graduates of the Faculty of Livestock, Fisheries and Nutrition in different categories in the year 2014.

Different categories of employment in relation to the field of specialization

Department	Permanent	Temporary	Self Employed	Unemployed	Total
Aquaculture & Fisheries	4	7	0	2	13
Livestock & Avian Sciences	3	6	0	2	11
Food Science & Technology	6	7	0	4	17
Applied Nutrition	0	11	0	5	16
Total	13	31	0	13	57

(Note: One student in the sample has not been indicated the employability category as such, this analysis is based on the information of 57 students)

Percentage employability in different categories of employment



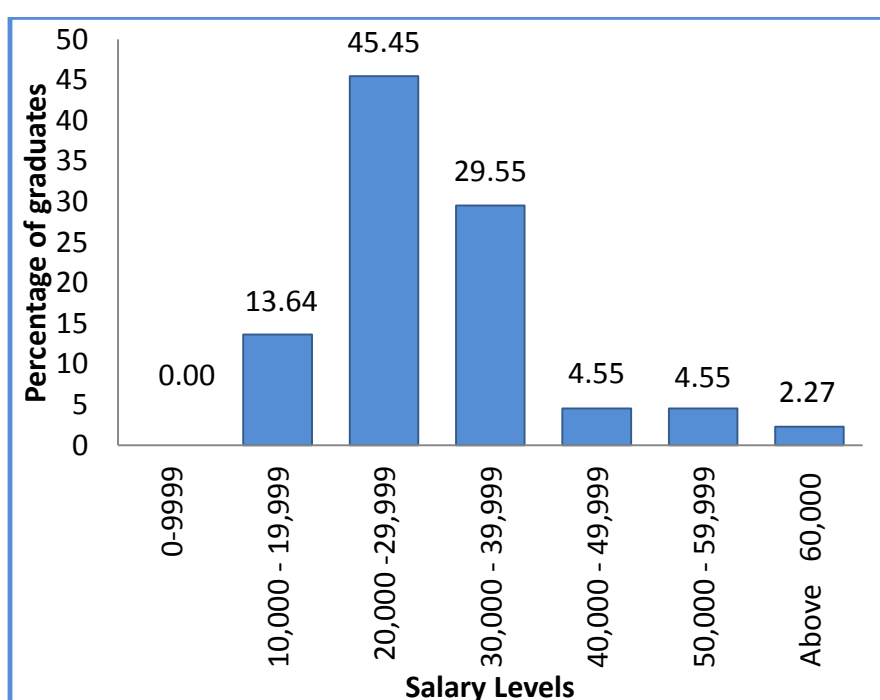
Monthly salary levels

Status of monthly basic salaries was based on the 44 respondents as others did not declare the income status in the questionnaires. Out of the 44 students responded for the question 40.92% obtained salaries above 30,000 rupees. Majority of the graduates (45.45%) were in the salary category from 20,000 to 29,999 rupees while 29.55% graduates obtained a monthly salary ranging from 30,000 to 39,999 rupees. Two of the responded graduates obtained rupees 40,000 to 49,999 and another two obtained above 60,000 rupees as monthly salaries. The lowest salary level was from 10,000 to 19,999 rupees and 13.64% graduates were in that category. The following table indicates the salary scales of graduates in relation to their field of specialization. The graph shows the percentage distribution of graduates of the Faculty of Livestock Fisheries and Nutrition in different monthly salary levels in 2014.

Salary levels of graduates in relation to their field of specialization

Monthly Salary Group (LKR)	Department				Total
	AF	LAS	FST	AN	
0-9,999	0	0	0	0	0
10,000 - 19,999	1	1	2	2	6
20,000 - 29,999	4	6	6	4	20
30,000 - 39,999	4	1	5	3	13
40,000 - 49,999	1	1	0	0	2
50,000 - 59,999	0	0	1	1	2
Above 60,000	0	0	0	1	1
Total	10	9	14	11	44

Percentage distribution of employed graduates in different salary levels



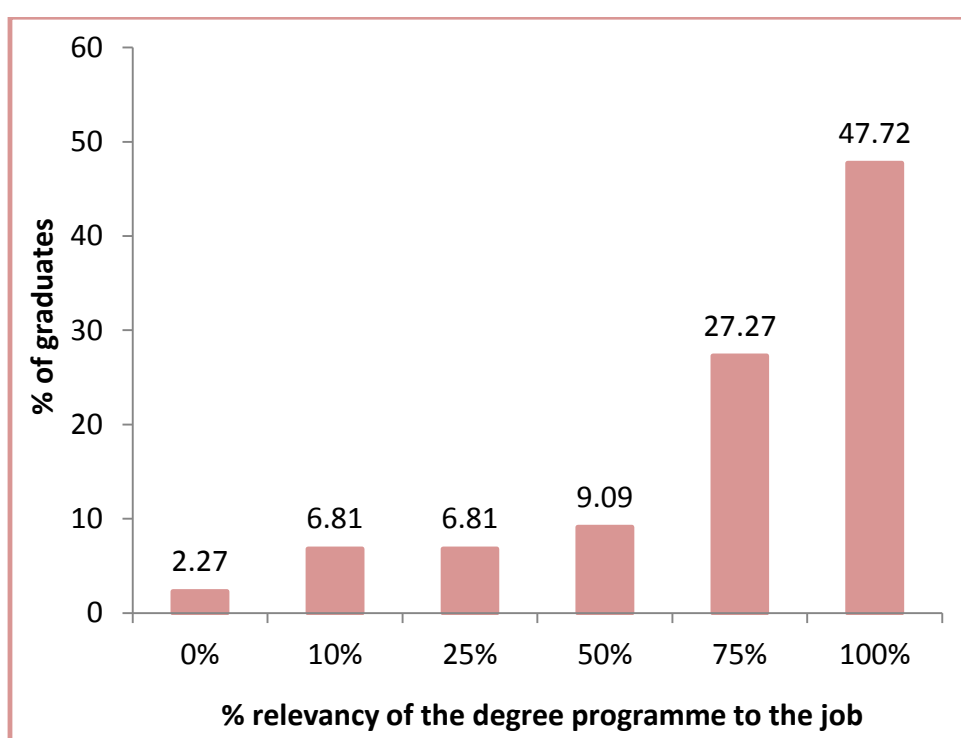
Relevancy of the degree programme to the job

Out of the 58 respondents 44 graduates answered this question and the information of those 44 was used for the analysis. Among all respondents 84% of the graduates were employed, which had more than 50% of relevancy to their field of study while 75% of graduates who had jobs, had 75% of relevancy to their fields of studies. 16% of the employed respondents had a low relevancy to their field of study. The following table indicates the relevancy of the field of specialization to the job and the graph shows the relevancy of their degree programme to the job.

Relevancy of the field of study to the job

Department	Level of Relevancy					
	Not Relevant 0%	10%	25%	50%	75%	100%
Aquaculture & Fisheries	0	1	1	0	4	4
Livestock & Avian Sciences	0	0	1	1	2	5
Food Science & Technology	0	2	1	2	4	5
Applied Nutrition	1	0	0	1	2	7
Total	1	3	3	4	12	21

Relevancy of the degree programme to the job



Postgraduate/Other Qualifications held at present

Among all respondents 52.27% graduates possessed the qualification of a diploma and none of them were enrolled in other postgraduate studies during the period of the survey. The following table shows the postgraduate/ other qualification presently held by the graduates of the Faculty of Livestock Fisheries and Nutrition in 2014.

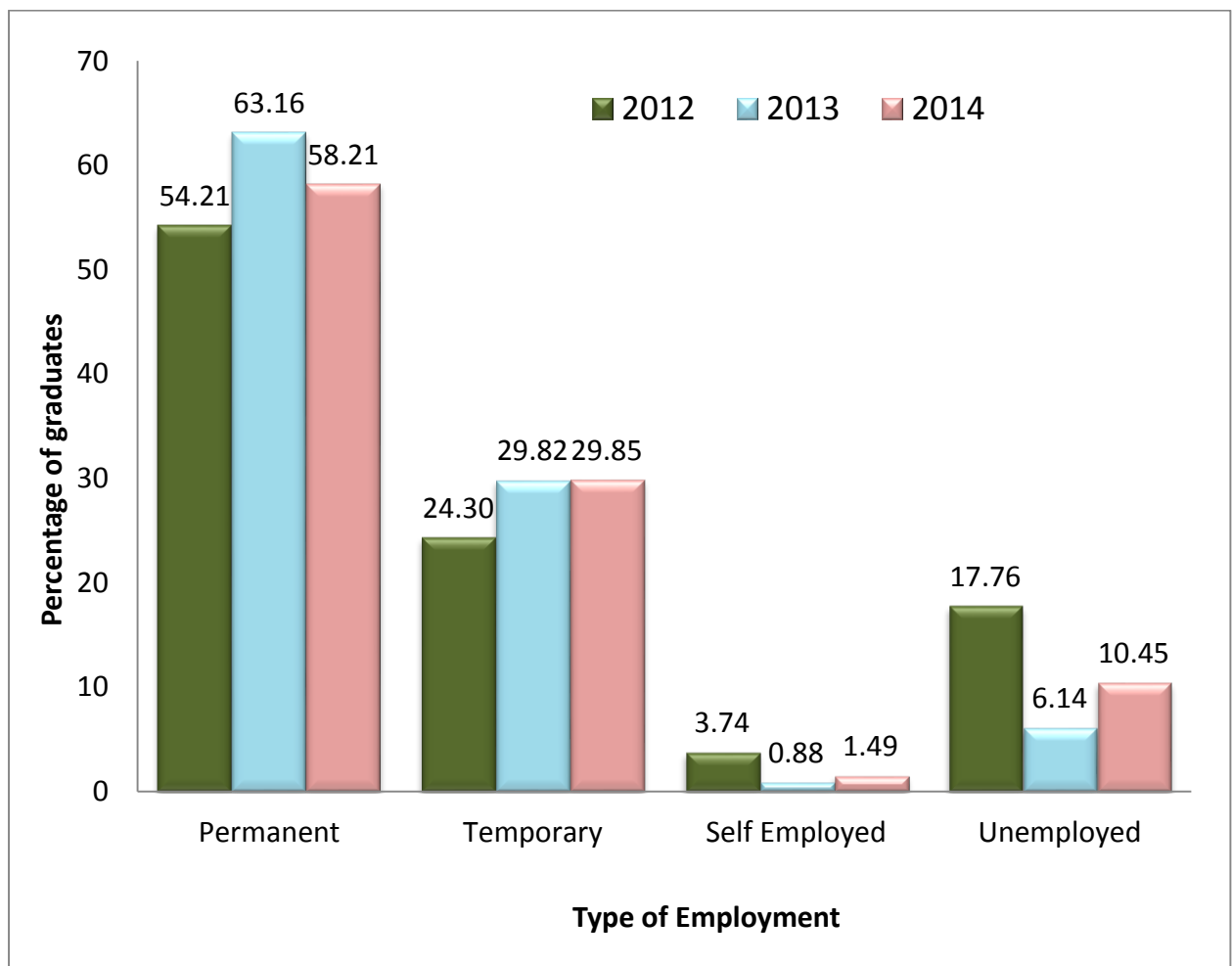
Postgraduate/Other Qualifications held at present

Department	Qualifications					
	MSc.	MPhil	MBA	PhD	LL.B	Diploma & Other
Aquaculture & Fisheries	0	0	0	0	0	5
Livestock & Avian Sciences	0	0	0	0	0	5
Food Science & Technology	0	0	0	0	0	6
Applied Nutrition	0	0	0	0	0	7
Total	0	0	0	0	0	23

Comparison of Employability in Four Faculties during the period from 2012 to 2014

This analysis is based on the data of the employability reports published by Wayamba University of Sri Lanka in 2012 and 2013 (Jayakody D.S. 2012, and 2013). Data for the year 2014 were obtained from the present employability survey. During the period of three years, there is no significant change in the employability of the graduates in the University. The highest employability in permanent jobs was reported in 2013 and the lowest was reported in 2012. The lowest percentage of unemployed graduates was reported in 2013 while it has risen to 10.45% in 2014. However, the percentage of the unemployed was comparatively lower in the years 2014 and 2013 than the year 2012. The following graph shows the employability status of the graduates from 2012 to 2014.

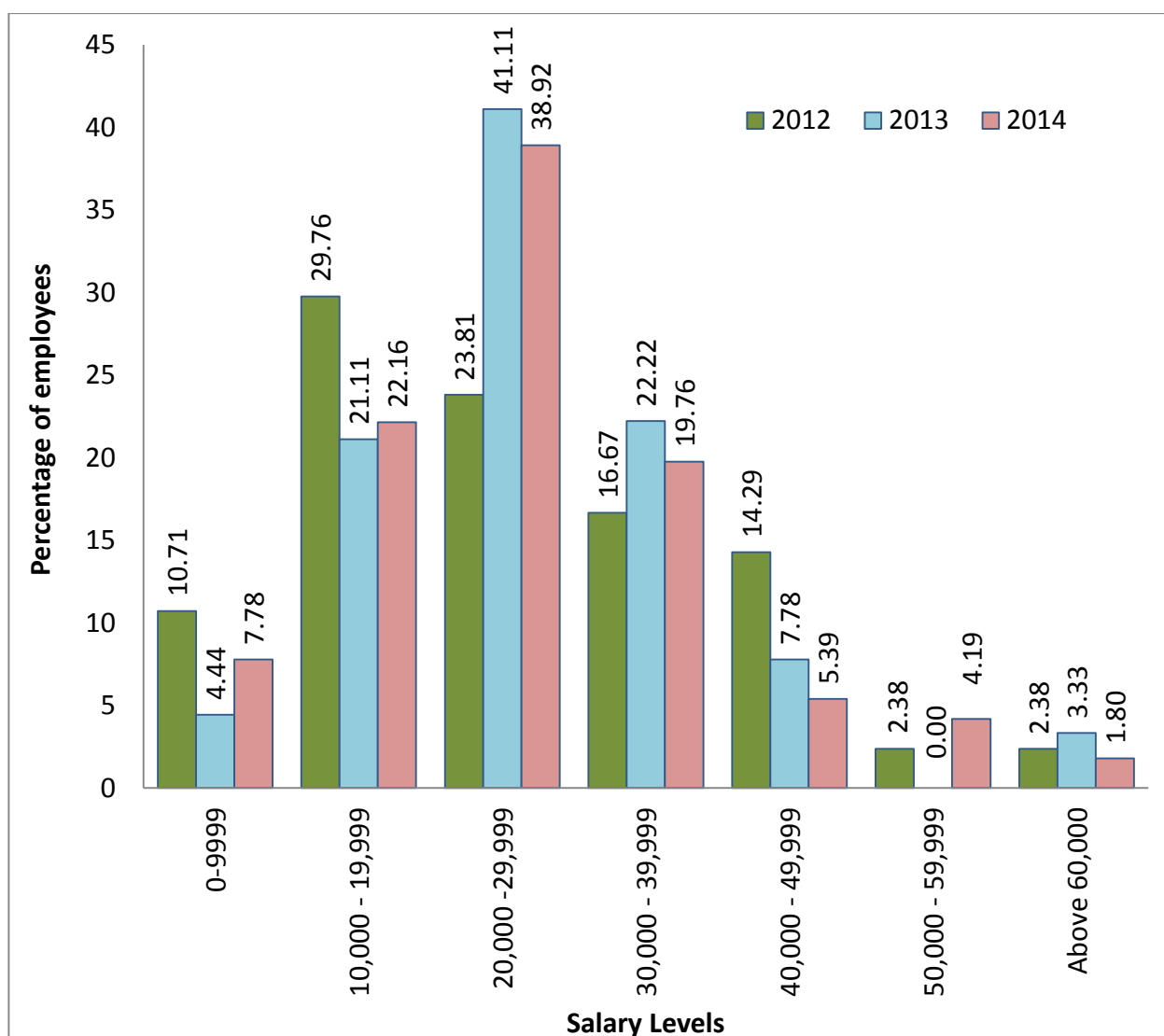
Percentage employability rates of the graduates during the period between the final date of the examination and the convocation in 2012, 2013 and 2014 respectively.



Comparison of salary levels of graduates in four faculties during the period from 2012 to 2014

During the period from 2012 to 2014 the highest percentage of graduates obtained salaries in the range of rupees 20,000 to 29,999. Compared to the year 2012 the mean salary levels increased from 2013 to 2014. More than 70% of graduates obtained a minimum salary of 20,000 rupees or above at the early stage of their careers in 2013 and 2014. In the year 2012, 33.33% of graduates obtained salaries above 30000 rupees and in 2014, it was reported as 31.14%. The following graph shows the percentage distribution of graduates in different salary levels.

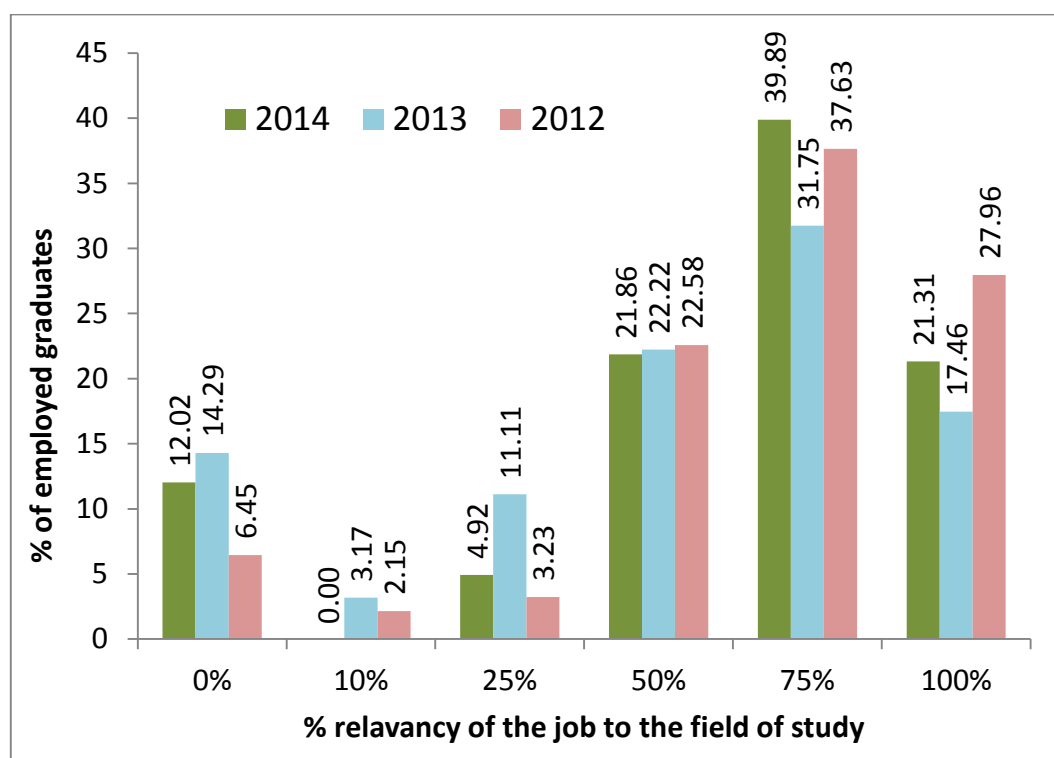
Distribution of graduates in different salary levels during the period between the final date of the examination and the convocation in 2012, 2013 and 2014 respectively.



Relevancy of the job to the field of study of graduates in years 2012, 2013 and 2014

Among the students graduated from the Wayamba University of Sri Lanka, 65.59% were employed in positions which had more than 75% of relevancy to their field of study in 2014 while it was 49.21% in 2013 and 61.2% in 2012. However it was reported that 88.17% of the graduates employed in 2014 obtained jobs, which had more than 50% of relevancy to their field of study. The results indicate the high compatibility of the courses to the current job market and the acceptance of the graduates by employers. The following graph shows the relevancy of the job to their field of study during the period from 2012 to 2014.

Relevancy of the job of the graduates to their field of study during the period from 2012 to 2014

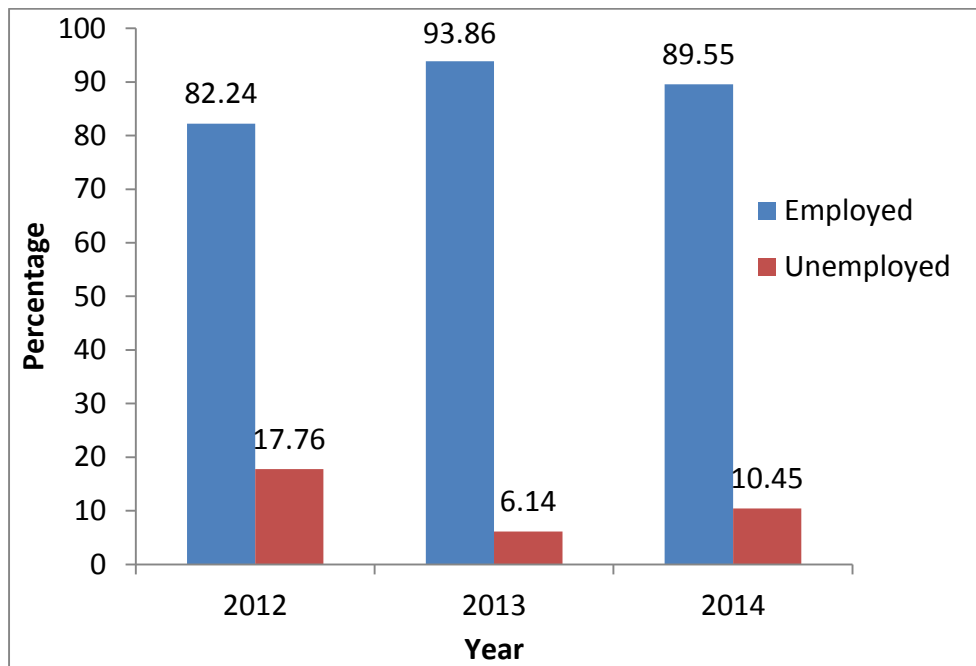


Overall Employability of Graduates in years 2012, 2013 and 2014

Overall employability of the graduates (including permanent, temporary and self-employment) were 82.24%, 96.86% and 89.55% in 2012, 2013 and 2014 respectively. In the year 2013 the highest overall employability was reported and the percentage of permanent jobs was comparatively higher in 2013.

The following graph shows the overall employability status of the graduates of the Wayamba University of Sri Lanka in years 2012, 2013 and 2014 respectively.

Comparative employability status of graduates in years 2012, 2013 and 2014.



The lowest overall employability was reported in 2012 and the performances of employability were relatively higher in the latter two years. When compared to the year 2012, there was a trend in increasing salary levels and the relevancy of the job to the field of study among all students graduated from four faculties. This result indicates the demand for the graduates and the better performances of graduates in the highly competitive job market.

References

Jayakody D.S. (2012). Employability report of Wayamba University of Sri Lanka. External Affairs Unit, Wayamba University of Sri Lanka.

Jayakody D.S. (2013). Employability report of Wayamba University of Sri Lanka. External Affairs Unit, Wayamba University of Sri Lanka.

McQuaid R.W and Lindsay C. (2005). The concept of employability. *Urban Studies*, Vol. 42, No. 2, 197–219

Ramanayake A. and Pathirathne L. (2012). Graduate employment, Wayamba University of Sri Lanka. WWW.ugc.ca.lk, (Access date 12/12/ 2014).

EXPLOYABILITY SURVEY - QUESTIONNAIRE

External Affairs Unit of the WUSL is collecting information on recently passed out graduates to assess their employment patterns. This information will help the University for future changes/improvements of the degree programmes of the four Faculties. Kindly devote few minutes of your valuable time to answer the questions given below. Some of the questions could be answered with a “√” in the related box.

1. **Name:**

.....

2. **Contact Address:**

.....

Tel:

E-mail:

3. **Age:**

Sex:

Male		Female	
------	--	--------	--

4. **University Index Number/Registration Number:**

5.

Faculty:		
Specialization-Department:		
Academic year:		
Name of the degree:	Year of Graduation	Grade of the degree
		First Class
		Second Upper
		Second Lower
		Pass
		Unsuccessful

6. **Presently are you employed?**

Yes		No	
-----	--	----	--

6. (a) **If no, give reasons**

.....

6. (b) **If yes as per question No. 06, please provide following information.**

<i>Present position at the working place (Job)</i>	<i>Nature of the position (Permanent/Temporary/Contract basis/Training)</i>	<i>Self Employment – Please Explain</i>	<i>Salary (Rs.) (Monthly)</i>

7. Is your degree relevant to your present occupation:

8. If yes, roughly what percentage

10%		25%		50%		75%		100%	
-----	--	-----	--	-----	--	-----	--	------	--

9. Are you satisfied with your job (If not why):

.....
.....

10. How long it took to get the first appointment after graduation: (if applicable).....

.....

+

11. Do you have additional Educational / Professional qualifications?

Yes	
No	

12. If yes please specify;

Qualification	Name of the Qualification
<i>Diploma</i>	
<i>M.Sc.</i>	
<i>M.Phil</i>	
<i>MBA</i>	
<i>Ph.D</i>	
<i>LL.B</i>	
<i>Other</i>	

13. Your G.C.E. (A/L) results at entry to University:

<i>School Attended</i>				
<i>A/L Year</i>				
<i>Subjects</i>				
<i>Grade</i>				
<i>Entry Attempt (1,2,3)</i>				
<i>Medium</i>				
<i>District</i>				
<i>Z Score</i>				

14. G.C.E. (O/L) result of English Language:

15. Any other comment related to your employability (if applicable)

.....

Signature:.....

Date: